



GAS METERS

# Residential and commercial gas meters with mechanical index



Type		UG-G1,6	UG-G2,5	UG-G4	6G4L	6G6	AM-G10	AM-G16
Maximum flow rate	m <sup>3</sup> /h	2,5	4	6	6	10	16	25
Minimum flow rate	m <sup>3</sup> /h	0,016	0,016/0,025	0,016/0,025 /0,040	0,04	0,06	0,1	0,16
Nominal flow rate	m <sup>3</sup> /h	1,6	2,5	4	4	6	10	16
Cyclic volume	dm <sup>3</sup>	1,2	1,2	1,2	2,2	2,2	5	5
Max working pressure	bar	0,5	0,5	0,5	0,5	0,5	0,5	0,5
Index max indication	m <sup>3</sup> /h	99999,999	99999,999	99999,999	99999,999	99999,999	99999,99	99999,99
Starting flow rate	dm <sup>3</sup> /h	3	5	5	5	8	13	13
Fireproof up to 650 °C according to EN 1359	bar	0,1	0,1	0,1	0,1	0,1		

Thread

Threaded connections may be manufactured acc. to any international norm (ISO; ANSI; British Standard etc.....)



## UG SERIES

Ug series gas meters are designed for measurement of gas supplied to appartments where sonsumption of gas is equivalent of 2,5 m<sup>3</sup>/h (G1,6), 4 m<sup>3</sup>/h (G2,5) and 6 m<sup>3</sup>/h (G4) of air density of 1,2 kg/m<sup>3</sup>.

THE GAS METERS CAN BE USED FOR MEASUREMENT OF:

- Natural gas
- City gas
- Propane-butane gas

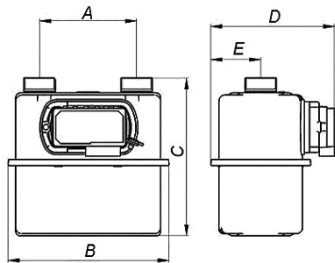
Gas meter is equipped with pulse magnet as standard. Pulse transmitter can be added at any time (1 imp = 0,01 m<sup>3</sup>).



Table 1. TECHNICAL DATA

		UG-G1,6	UG-G2,5	UG-G4
Maximum flow rate	m <sup>3</sup> /h	2,5	4	6
Minimum flow rate	m <sup>3</sup> /h	0,016	0,016/0,025	0,016/0,025/0,040
Nominal flow rate	m <sup>3</sup> /h	1,6	2,5	4
Cyclic volume	dm <sup>3</sup>	1,2	1,2	1,2
Max working pressure	bar	0,5	0,5	0,5
Index max indication	m <sup>3</sup> /h	99999,999	99999,999	99999,999
Starting flow rate	dm <sup>3</sup> /h	3	5	5
Fireproof up to 650 °C according to EN 1359	bar	0,1	0,1	0,1

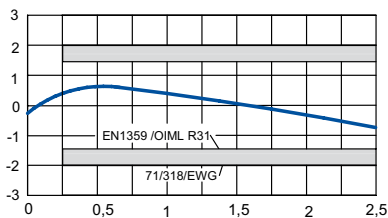
## DIMENSIONS



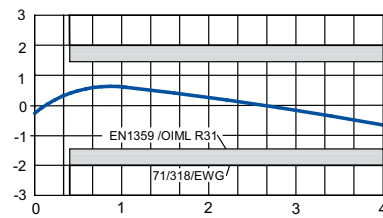
A [mm]	B [mm]		C [mm]		D [mm]		E [mm]		Weight
	Variant I	Variant II	Variant I	Variant II	Variant I	Variant II	Variant I	Variant II	
100	-	200	-	205 to 211	-	161	-	70	1,7 kg
110	216	200	214	205 to 211	167	161	67	70	~ 2,0 kg
130	216	200	214	205 to 211	167	161	67	70	~ 2,0 kg
152,4	235	-	268	-	177	-	73	-	~ 3,0 kg
160	235	-	240	-	177	-	73	-	~ 3,0 kg
220	283	-	222	-	176	-	72	-	~ 2,0 kg

## CURVES OF TYPICAL ERROR AND PRESSURE LOSS

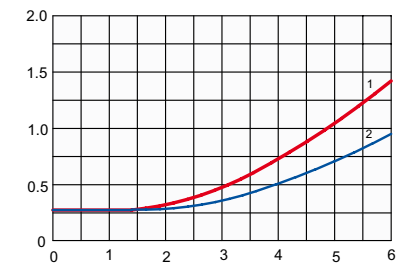
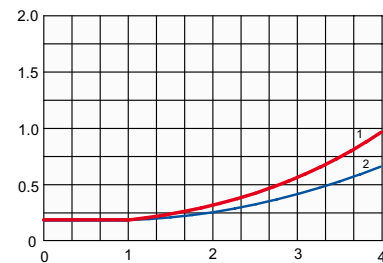
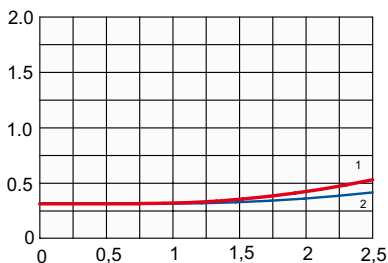
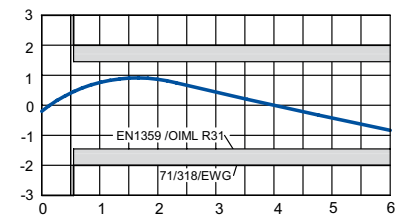
UG-G1,6



UG-G2,5



UG-G4



## 6G4L, 6G6

The gas meter 6G4L and 6G6 is designed for measurement of gas supplied to apartments where maximum consumption of gas is equivalent of 6m<sup>3</sup> (G4) and 10m<sup>3</sup> (G6) of air density of 1,2 kg/m<sup>3</sup>.

### THE GAS METERS CAN BE USED FOR MEASUREMENT OF:

- Natural gas
- City gas
- Propane-butane gas

Gas meter is equipped with pulse magnet as standard. Pulse transmitter can be added at any time (1 imp = 0,01 m<sup>3</sup>).

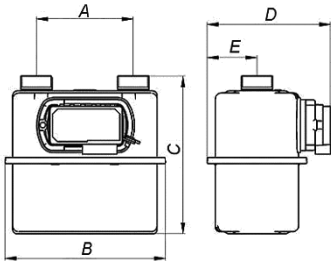


6G4L, 6G6

Table 3. TECHNICAL DATA

		6G4L	6G6
Maximum flow rate	m <sup>3</sup> /h	6	10
Minimum flow rate	m <sup>3</sup> /h	0,04	0,06
Nominal flow rate	m <sup>3</sup> /h	4	6
Cyclic volume	dm <sup>3</sup>	2,2	2,2
Max working pressure	bar	0,5	0,5
Index max indication	m <sup>3</sup> /h	99999,999	99999,999
Starting flow rate	dm <sup>3</sup> /h	5	8
Fireproof up to 650 °C according to EN 1359	bar	0,1	0,1

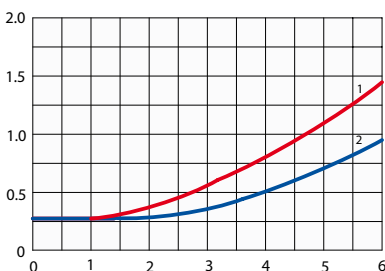
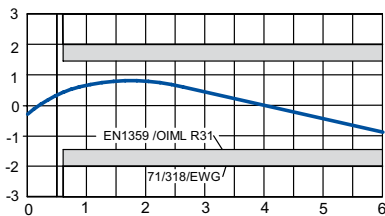
## DIMENSIONS



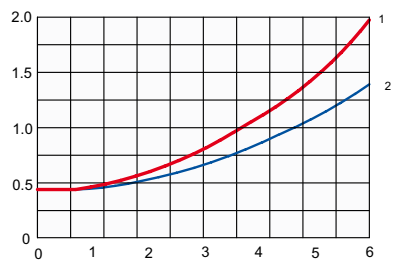
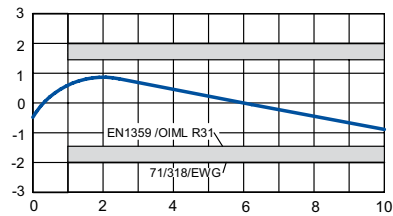
A [mm]	B [mm]	C [mm]	D [mm]	E [mm]	Weight
Single pipe	231	289	187	78	3,0 kg
130	231	276	187	78	3,4 kg
220	326	286	190	79	3,4 kg
250	326	276	190	79	3,4 kg

## CURVES OF TYPICAL ERROR AND PRESSURE LOSS

### 6G4L



### 6G6





## AM-G10/AM-G16

The gas meters AM-G10 and AM-G16 are designed for measurement of gas supplied to commercial and industrial gas meters where maximum consumption of gas is equivalent of 16 m<sup>3</sup> (G10) and 25m<sup>3</sup> (G16) of air density of 1,2 kg/m<sup>3</sup>.

### THE GAS METERS CAN BE USED FOR MEASUREMENT OF:

- Natural gas
- City gas
- Propane-butane gas

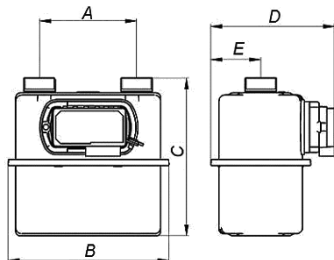
Gas meter is equipped with pulse magnet as standard. Pulse transmitter can be added at any time (1 imp = 0,1 m<sup>3</sup>).



Table 4. TECHNICAL DATA

		AMG 10	AMG 16
Maximum flow rate	m <sup>3</sup> /h	16	25
Minimum flow rate	m <sup>3</sup> /h	0,1	0,16
Nominal flow rate	m <sup>3</sup> /h	10	16
Cyclic volume	dm <sup>3</sup>	5	5
Max working pressure	bar	0,5	0,5
Index max indication	m <sup>3</sup> /h	999999,99	999999,99
Starting flow rate	dm <sup>3</sup> /h	13	13
Fireproof up to 650 °C according to EN 1359	bar	0,1	0,1

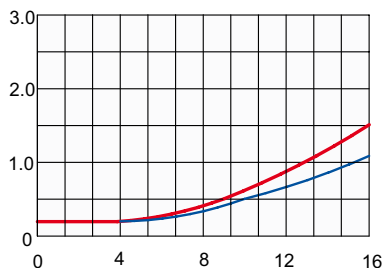
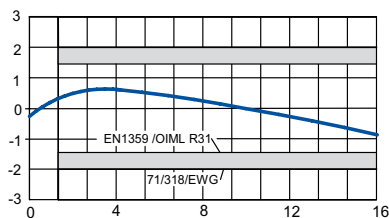
## DIMENSIONS



A [mm]	B [mm]	C [mm]	D [mm]	E [mm]	Weight
280	395	345	214	93	6,8 kg
300	395	345	214	93	6,8 kg

## CURVES OF TYPICAL ERROR AND PRESSURE LOSS

### AMG 10



### AMG 16

